

ROXBOROUGH WATER AND SANITATION DISTRICT

6222 North Roxborough Park Road
Littleton, Colorado 80125
Ph: (303) 979-7286 Fax: (303) 933-3649

Water and Sewer Connection Instructions:

A Water and Sewer Connection Permit is required before any digging can take place. Utility locates are required by law – call Utility Notification Center of Colorado at 1-800-922-1987.

Rules and Regulations of the Roxborough Water and Sanitation District:

Purchase of a Water and Sewer Connection Permit obligates the Owner to strictly adhere to all of the District's Rules and Regulations that pertain to water and sewer service line connections. Exceptions to the District's Rules and Regulations may be made only upon application in writing to the District Manager.

The information needed is covered in:

Rules and Regulations, Volume I, Administrative Policies and Procedures
Rules and Regulations, Volume II, Technical Standards and Specifications

They are available on the District's website (www.roxwater.com), in the District office to read, or they may be purchased for \$25 per volume.

Installers General Water and Sewer Connection Instructions:

The following instructions will help you and the District in getting your water and sewer connections made with a minimum of difficulty and are not intended to replace or supersede any information in the District's Rules and Regulations. These instructions are general in nature and will not cover all situations that may arise during the connection process. If at any time a problem or question occurs, please be sure to contact the District for instructions before proceeding with a connection. Conflicts will be governed by the Rules and Regulations. Contact Roxborough Water and Sanitation District at 303-979-7286 and the Utility Notification Center of Colorado at 1-800-922-1987 at least 48 hours prior to any kind of water and sewer excavation in order for the District to locate water and sewer lines.

1. Water Line Connection – 24 hours notice for inspection:

- A. The owner shall supply all materials except the water meter and radio frequency reader.
- B. Service Size: water services shall be adequately sized to meet the requirements of the facility being served. The minimum water service line shall be three-quarter inch (3/4"). The service line and meter shall be sized according to AWWA Manual M22.
- C. All three-quarter inch (3/4") taps shall be wet taps, using a double strap tapping saddle with corporation stop and three-quarter inch (3/4") K copper tubing. A curb stop shall be installed at least two feet (2') inside the property line and two feet (2') off the property line.
- D. Curb stops shall be buried a minimum of four feet, six inches (4' 6") and a maximum of five feet, six inches (5' 6"). The curb stop box shall be a minimum of two inches (2") and a maximum of four inches (4") above final grade or back of sidewalk.

- E. If any portion of the service line is to be located under a hard surface such as a driveway, then the service line will be sleeved in SDR 35 pipe. If in doubt, consult the District's staff.
- F. Water service lines shall be a minimum of five feet (5') deep. The bedding shall be a minimum of four inches (4") below the water line and four inches (4") over the water line. Trenching for water lines shall be separated horizontally at least ten feet (10') from sewer lines. Common trenching is not allowed. Trenches shall remain open until District operations personnel can inspect all installations. No partial inspection for water and sewer inspections will be permitted without approval prior to excavation by Roxborough Water and Sanitation District.

2. Sewer Line Connection – 24 hours notice for inspection:

- A. The owner shall supply all the materials for the sewer line connection.
- B. Wastewater service lines shall be constructed in the shortest and straightest route possible, using ASTM 3034 SDR 35 plastic pipe or the equivalent. Service lines shall be installed in accordance with UBC and UPC standards.
- C. When tapping into an existing wastewater main, a four inch (4") sewer tapping machine shall be used. You must retrieve the "donut" or cut out and provide a four inch (4") PVC saddle for the connection.
- D. If any portion of the service line is located under a hard surface such as a driveway, the use of C-900 PVC pipe will be required.
- E. Sewer service lines shall be a minimum of three feet (3') deep. The bedding shall be a minimum of four inches (4") below the sewer line and four inches (4") over the sewer line. Trenching for sewer lines shall be separated horizontally at least ten feet (10') from water lines. Common trenching is not allowed. Trenches shall remain open until District operations personnel can inspect all installations. No partial inspections will be permitted for water and sewer without approval prior to excavation by Roxborough Water and Sanitation District.

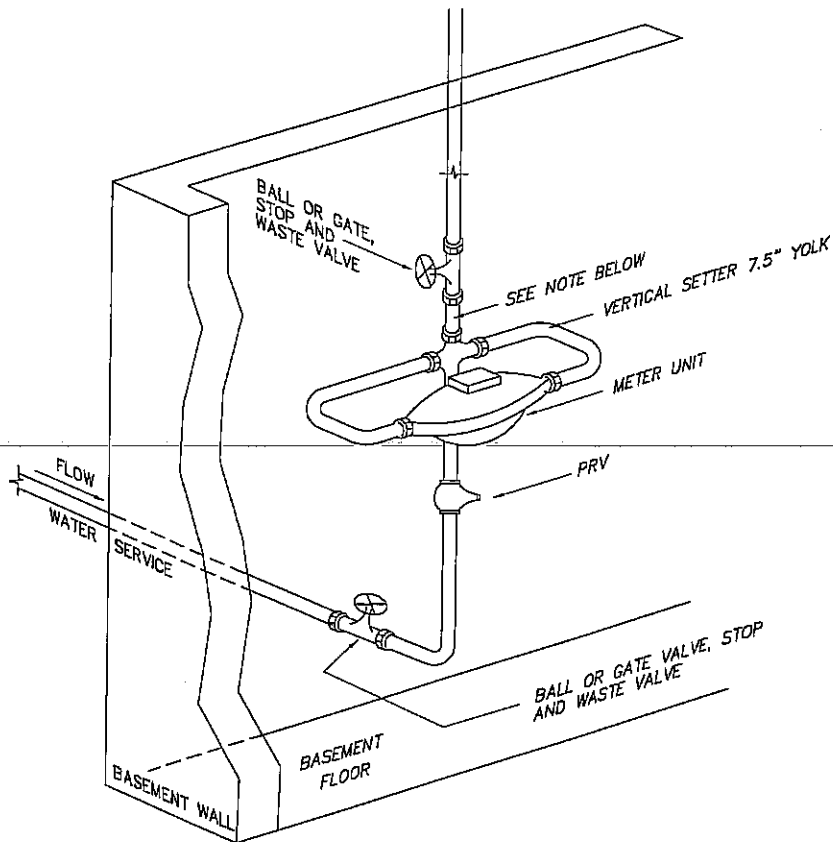
3. Water Meter Installation:

- A. Install all inside plumbing in the following order: (see attached Drawing 2-16)
 - 1. A three-quarter inch (3/4") ball or gate, stop and waste valve, which is readily accessible, where the water line comes in the building.
 - 2. A pressure regulator – Watts Model 25AUB, between the stop and waste ball or gate valve and the meter setter.
 - 3. A meter setter for a five-eighths inch (5/8") x three-quarter inch (3/4") meter and a seven and a half (7 1/2") yolk.
 - 4. A three-quarter inch (3/4") ball or gate, stop and waste valve above the meter setter.
- B. Water meters shall be set when the owner requests water for the structure. Meter sets shall be ordered from Roxborough Water and Sanitation District (303-979-7286), at least 24 hours in advance. Note: If meter cannot be set due to improper installation, a \$25 fee shall be assessed for each return inspection. If the building is occupied prior to a meter set, a \$1,000 fine shall be assessed by the District. Meter sets in cold months must have a permanent heat source available.

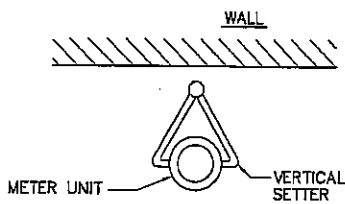
- C. Jumpers are not allowed in the District. Un-metered water use is prohibited without written permission from the District. If this provision is violated, the owner of the offending service shall be immediately assessed a \$300 fine per incident.
- D. The District will supply and maintain the water meter, which was paid for when the fee for the Water and Sewer Connection Permit was collected. It is the owner's responsibility to insure that the water billing address is correct and bills are paid promptly. The owner shall notify the District of any change of ownership or of any change of billing responsibility. Owners must allow District representatives to access the water and sewer services upon request. (Please refer to District Rules and Regulations, Part 1, Volume 1, for Right of Entry terminology)

Reminders:

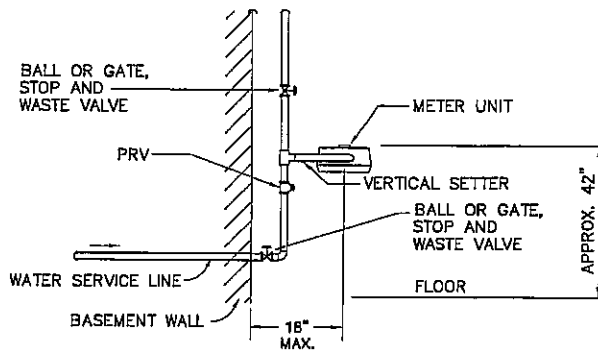
1. A Water and Sewer Connection Permit is required before any digging can take place.
2. Utility locates must be requested.
3. If at any time a problem or questions occur, please be sure to contact the District for instructions before proceeding with a connection.
4. Jumpers are not allowed in this District. Un-metered water is prohibited.
5. Any variances must be requested in writing and approved by the District prior to excavation.
6. Rules and Regulations are available at www.roxwater.com, or in the District's office.



ISOMETRIC VIEW




PLAN



ELEVATION

NOTES:

1. ALL METER LOCATIONS TO BE IN BASEMENTS AND NOT CRAWL SPACES.
2. A FLOOR DRAIN SHALL BE PLACED NEAR THE METER INSTALLATIONS FOR NEW SERVICES.
3. INSTALL METER AT 42" ABOVE FLOOR UNLESS PROHIBITED BY SERVICE LINE CONFIGURATION.
MIN HT.=18"; MAX HT.=48"

	<p>ROXBOROUGH PARK METROPOLITAN DISTRICT</p>
<p>REMOTE READING 3/4" & 1" METER TYPICAL INSIDE SETTING</p>	
<p>DATE: FEBRUARY, 2006</p>	<p>DRAWING NO. 2-16</p>